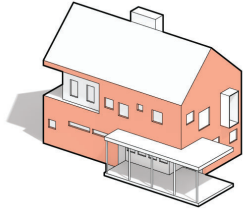


Exterior Options

select from these durable and timeless materials

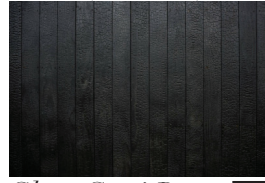


Tier I (included)



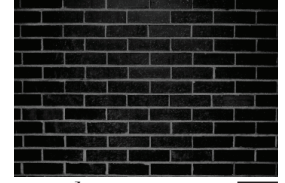
Stucco

Tier II (+\$30,000)



Shou Sugi Ban

Tier III (+\$60,000)



Brick



Vertical Siding



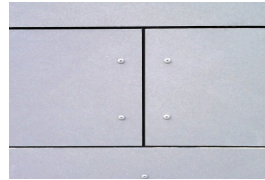
Concrete Plaster



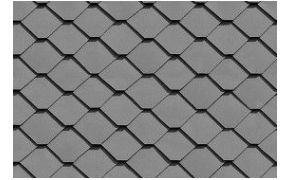
Standing Seam



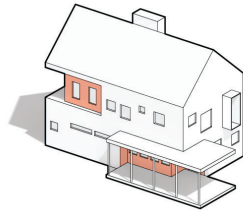
Board & Batten



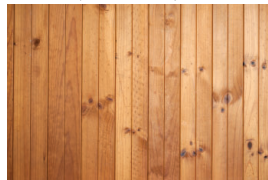
Cement Board



Metal Panel



Tier I (included)

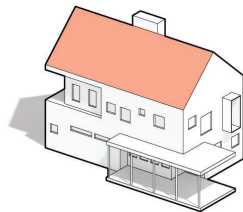


Red Cedar

Tier II (+\$5,000)



Accoya Wood

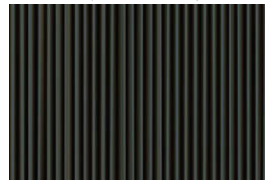


Tier I (included)



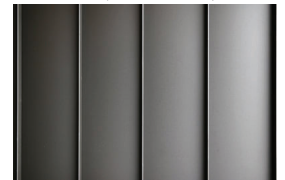
Asphalt Shingle

Tier II (+\$10,000)



Corrugated Metal

Tier III (+\$20,000)



Standing Seam

Notes

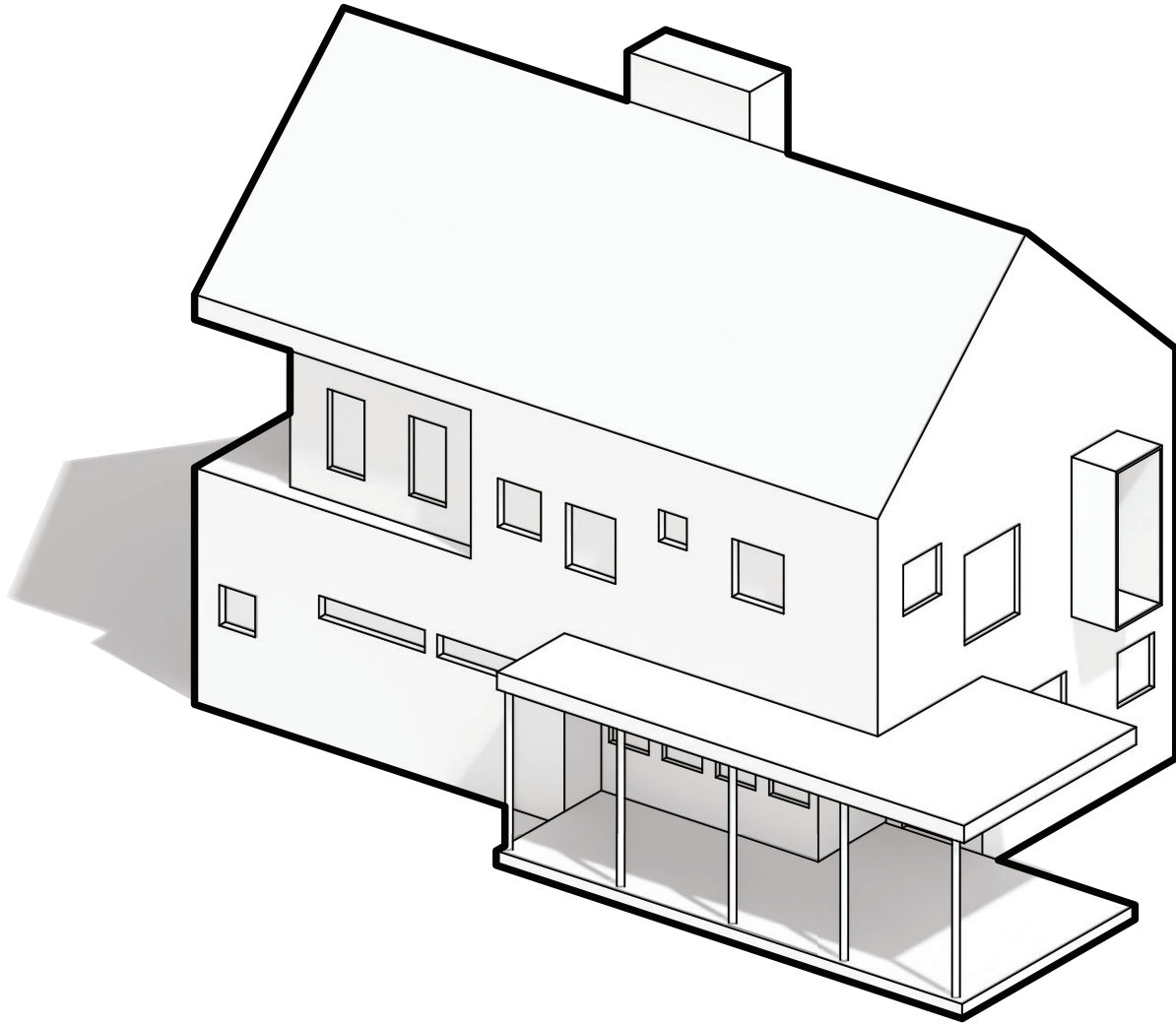
.....

.....

.....

.....

Color Your Options



Roofing Material *Accent Material*

Notes

A large rectangular area containing horizontal dotted lines for writing notes.